



# 2025

# Training Calendar

## Welcome to our brand-new training calendar for 2025!

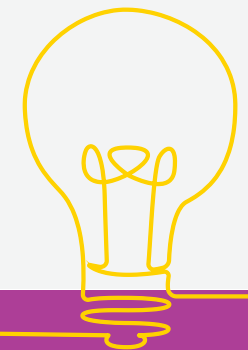
Are you ready to experience engaging professional development in the health and human services career?

Our innovative training program is designed to focus on essential skills and cutting-edge knowledge that supports your practice.

Whether you're just starting out or looking to advance your expertise, our flexible courses cater to all experience levels and career paths within health and human services.

## Why choose our programs?

- **Flexible Learning Options:** Choose the path that suits you best! Attend engaging online sessions from the comfort of your home, or opt for hands-on, face-to-face classes. This calendar provides the ultimate flexibility to balance work, life, and education.
- **Industry-Relevant Curriculum:** Gain practical, real-world knowledge directly applicable to your field. Each course is designed with input from industry practitioners, ensuring that you're learning the latest techniques, skills, and best practices that top employers look for.
- **Expert Voices:** Learn from experienced professionals who bring real-world insights and years of experience to every session. Our facilitators are committed to fostering dynamic, interactive learning.



# FEBRUARY

FRIDAY 7<sup>TH</sup> FEBRUARY

## Working Around the Clutter

Online 10am-2pm (AEST)

For staff working with clients and their families where clutter and hoarding behaviours exist as a backdrop to the distinct service delivery focus of your organisation. Deepen your understanding of the issue and explore ideas to help you navigate your service delivery around it.

TUESDAY 11<sup>TH</sup> FEBRUARY

## Supporting Individuals in the

**Legal System** Online 12pm-4pm (AEST)

This course explores the complexities of working with individuals encountering the legal system through a neurodevelopmental, attachment and trauma-informed lens. This equips professionals with strategies to provide compassionate and effective support in legal representation, advocacy, corrections, probation or other related roles.

THURSDAY 20<sup>TH</sup> FEBRUARY

## Understanding Parent's Struggling with Parenting

Online 10am-2pm (AEST)

Explore the neuroscience of the 5 Parenting Systems (Daniel Hughes and Johnathan Baylin) that influence a parent's capacity to provide consistent nurturing caregiving and how we can integrate this understanding into our family support practice.

TUESDAY 25<sup>TH</sup> FEBRUARY

## Overview of Trauma Informed Positive Behaviour Support

Online 12pm-4pm (AEST)

This course focuses on the impact of trauma on physical and brain development. Participants will identify the different ways in which trauma presents, including behaviours of concern and how they can be understood. The session will highlight the underpinning framework to provide support to people with behaviour support needs.

TUESDAY 25<sup>TH</sup> & WEDNESDAY 26<sup>TH</sup> FEBRUARY

## Proactive Approaches to Safe Incident Intervention (PASII)

Darwin, NT | 9.30am - 4.30pm both days (ACST)

This two-day face-to-face course focuses on participants developing the skills and awareness to manage high-risk behaviours (including critical incidents) in a safe and informed way. The course takes a comprehensive and systematic approach designed to support individuals and teams to develop greater understanding and empathy towards a client and to prevent, predict, assess and manage incidents in a manner that helps minimise risk and provide positive outcomes. It focuses on a person-centred framework, putting the client, their support, development and safety at the centre of the picture. It encourages participants to look beyond the behaviours and understand the communicative function behind them.

# MARCH

WEDNESDAY 5<sup>TH</sup> & THURSDAY 6<sup>TH</sup> MARCH

## Proactive Approaches to Safe Incident Intervention (PASII)

Perth WA | 9.30am - 4.30pm both days (AWST)

This two-day face-to-face course focuses on participants developing the skills and awareness to manage high-risk behaviours (including critical incidents) in a safe and informed way. The course takes a comprehensive and systematic approach designed to support individuals and teams to develop greater understanding and empathy towards a client and to prevent, predict, assess and manage incidents in a manner that helps minimise risk and provide positive outcomes. It focuses on a person-centred framework, putting the client, their support, development and safety at the centre of the picture. It encourages participants to look beyond the behaviours and understand the communicative function behind them.

THURSDAY 6<sup>TH</sup> MARCH

## Playful Practice

Online 10am-2pm (AEST)

An opportunity to explore play as a purposeful approach within our practice both for our clients' wellbeing and our own. Apply aspects of neuroscience to underpin the rational of targeted playful activities within care / support plans and practice.

THURSDAY 13<sup>TH</sup> MARCH

## The Nature of Therapeutic Relationships

Online 12pm-4pm (AEST)

This course explores the essential nature of therapeutic relationships focusing on the disability, out of home care and criminal justice settings. It discusses the principles of empathy, trust, boundaries and professional conduct to promote positive outcomes using a trauma-informed approach.

WEDNESDAY 19<sup>TH</sup> MARCH

## Understanding Gambling

Online 10am-2pm (AEST)

This course provides an in-depth exploration of gambling and gambling addiction through the lens of neurodevelopment, attachment theory and trauma-informed practices. Participants will gain insight into trauma-informed strategies for responding to people experiencing gambling addiction.

WEDNESDAY 26<sup>TH</sup> MARCH

## Cultural Competency

Online 12pm-4pm (AEST)

This program discusses the impact culture has on our work, behaviours, language and how we negotiate challenges, problems and conflicts. Participants will focus on how to build and repair relationships and identify hidden biases. There will be a focus on self-reflection along with cultural misunderstandings and miscommunication in the workplace.

**Bookings for February courses can be accessed using this link:**

[https://salconsulting.jobreadyrto.com.au/apply\\_to\\_courses/2025\\_PD\\_Feb](https://salconsulting.jobreadyrto.com.au/apply_to_courses/2025_PD_Feb)

**Bookings for March courses can be accessed using this link:**

[https://salconsulting.jobreadyrto.com.au/apply\\_to\\_courses/2025\\_PD\\_Mar](https://salconsulting.jobreadyrto.com.au/apply_to_courses/2025_PD_Mar)

# APRIL

WEDNESDAY 2<sup>ND</sup> & THURSDAY 3<sup>RD</sup> APRIL

## Proactive Approaches to Safe Incident Intervention (PASII)

Sydney, NSW | 9.30am - 4.30pm both days (AEST)

This two-day face-to-face course focuses on participants developing the skills and awareness to manage high-risk behaviours (including critical incidents) in a safe and informed way. The course takes a comprehensive and systematic approach designed to support individuals and teams to develop greater understanding and empathy towards a client and to prevent, predict, assess and manage incidents in a manner that helps minimise risk and provide positive outcomes. It focuses on a person-centred framework, putting the client, their support, development and safety at the centre of the picture. It encourages participants to look beyond the behaviours and understand the communicative function behind them.

WEDNESDAY 9<sup>TH</sup> APRIL

## First Responders and Trauma

Online 10am-2pm (AEST)

This course equips first responders with the knowledge and tools to manage trauma and high-stress situations while maintaining self-regulation and supporting those in crisis. Participants will focus on the importance of safe, ethical and legal protective behaviours and recognising the need for support both before and after crisis situations.

MONDAY 14<sup>TH</sup> APRIL

## Alcohol and Other Drugs

Online 10am-2pm (AEST)

This course focuses on the impact of the current and changing contexts of AOD in Australia including the historical, current and emerging models of AOD practice. Participants will discuss services, prevention and risk minimisation and intervention from a disability perspective.

TUESDAY 22<sup>ND</sup> APRIL

## Supporting Individuals Through Environment and Ecology

Online 12pm-4pm (AEST)

This course explores the critical role environments and ecologies in working with people with complex and varied needs. Participants will discuss how to create supportive environments that promote autonomy and positive outcomes.

THURSDAY 24<sup>TH</sup> APRIL

## Neurodevelopmental Disorders

Online 12pm-4pm (AEST)

This course highlights the causes and symptoms of a range of disorders along with particular diagnostic methods. Participants will discuss relevant treatments within a focus of neurodevelopment and the impact of attachment and trauma.

Bookings for April courses can be accessed using this link:

[https://salconsulting.jobreadyrto.com.au/apply\\_to\\_courses/2025\\_PD\\_Apr](https://salconsulting.jobreadyrto.com.au/apply_to_courses/2025_PD_Apr)

# MAY

WEDNESDAY 7<sup>TH</sup> MAY

## Understanding Gambling

Online 12pm-4pm (AEST)

This course provides an in-depth exploration of gambling and gambling addiction through the lens of neurodevelopment, attachment theory and trauma-informed practices. Participants will gain insight into trauma-informed strategies for responding to people experiencing gambling addiction.

MONDAY 12<sup>TH</sup> MAY

## 6 Core Strengths

Online 10am-2pm (AEST)

This course focuses on the work of Dr Bruce Perry in developing potential for children and young people. Participants will discuss strategies for building strength in the areas of attachment, self-regulation, affiliation, attunement, tolerance and respect.

WEDNESDAY 14<sup>TH</sup> & THURSDAY 15<sup>TH</sup> MAY

## Proactive Approaches to Safe Incident Intervention (PASII)

Melbourne, VIC | 9.30am - 4.30pm both days (AEST)

This two-day face-to-face course focuses on participants developing the skills and awareness to manage high-risk behaviours (including critical incidents) in a safe and informed way. The course takes a comprehensive and systematic approach designed to support individuals and teams to develop greater understanding and empathy towards a client and to prevent, predict, assess and manage incidents in a manner that helps minimise risk and provide positive outcomes. It focuses on a person-centred framework, putting the client, their support, development and safety at the centre of the picture. It encourages participants to look beyond the behaviours and understand the communicative function behind them.

WEDNESDAY 21<sup>ST</sup> MAY

## Supporting Older Adults in Aged Care and Beyond

Online 10am-2pm (AEST)

This course explores the aged care system and other support pathways for older people. It focuses on the areas of neurodevelopment, attachment and trauma-informed practice to promote a high quality life for older persons, focusing on dignity, autonomy & support.

TUESDAY 27<sup>TH</sup> MAY

## Playful Practice

Online 12pm-4pm (AEST)

An opportunity to explore play as a purposeful approach within our practice both for our clients' wellbeing and our own. Apply aspects of neuroscience to underpin the rationale of targeted playful activities within care / support plans and practice.

Bookings for May courses can be accessed using this link:

[https://salconsulting.jobreadyrto.com.au/apply\\_to\\_courses/2025\\_PD\\_May](https://salconsulting.jobreadyrto.com.au/apply_to_courses/2025_PD_May)

# JUNE

WEDNESDAY 4<sup>TH</sup> JUNE

## Overview of Trauma Informed Positive Behaviour Support

Online 10am-2pm (AEST)

This course focuses on the impact of trauma on physical and brain development. Participants will identify the different ways in which trauma presents, including behaviours of concern and how they can be understood. The session will highlight the underpinning framework to provide support to people with behaviour support needs.

WEDNESDAY 11<sup>TH</sup> JUNE

## Understanding Parent's Struggling with Parenting

Online 12pm-4pm (AEST)

Explore the neuroscience of the 5 Parenting Systems (Daniel Hughes and Johnathan Baylin) that influence a parent's capacity to provide consistent nurturing caregiving and how we can integrate this understanding into our family support practice.

TUESDAY 17<sup>TH</sup> JUNE

## Supporting Quality of Life

Online 10am-2pm (AEST)

This session discusses what makes a good life for people living with disability. Participants will identify what makes life rich and meaningful for each individual and how to measure this appropriately.

THURSDAY 26<sup>TH</sup> JUNE

## Principles of Case Management

Online 12pm-4pm (AEST)

The course focuses on case management as a collaborative process that assesses, plans, implements, coordinates, monitors and evaluates options and services in order to meet a person's health and human services needs. Participants will discuss advocacy, communication and resource management that promotes quality interventions and outcomes.

**Bookings for June courses can be accessed using this link:**

[https://salconsulting.jobreadyrto.com.au/apply\\_to\\_courses/2025\\_PD\\_Jun](https://salconsulting.jobreadyrto.com.au/apply_to_courses/2025_PD_Jun)

## BOOKING INFORMATION:

All online courses cost \$250 +GST per person.

Face-to-face PASII programs cost \$695 +GST per person.

Invoices will be sent to you once we receive your booking. Payments can be made by credit card or direct deposit.

- You are able to transfer enrolment details to other people prior to the course commencement.
- If a participant has commenced the course, no transfer or refund is possible.
- Cancellations received more than 7 working days in advance of the start of the course will be eligible for a refund minus a 25% administration charge.
- Where no cancellation is received or where nominated participants do not attend, full fees are due and payable.
- SAL Consulting reserves the right to cancel the training due to unforeseen circumstances.
- A full refund will be offered where SAL Consulting cancels the training.

All online courses will be run through the Zoom platform. We recommend you setting up a Zoom account prior to the start time of the training.

- Webinar details will be sent to participants 5-7 days before the session.
- We will send copies of slides and other learning resources after the session has completed.
- We will not be recording the sessions.
- You will receive a certificate of attendance once you have completed an online feedback survey.

Venue confirmation for face-to-face courses will be provided in early 2025. Approximate locations will be

- Pennant Hills (NSW)
- Winnellie (NT)
- Success (WA)
- Ringwood (VIC)

